

Integrated Pest Management Module

Getting Started Guide

The Integrated Pest Management Module is an optional module that can be added on to an existing WeatherLink® installation. It is compatible with all versions of WeatherLink 5.6 or later on computers running Windows XP SP3 or later.

Before installing this software, make sure WeatherLink has been installed on your computer. See the *WeatherLink Getting Started Guide* for instructions.

Close WeatherLink before installing the Pest Management Module.

Install the Software

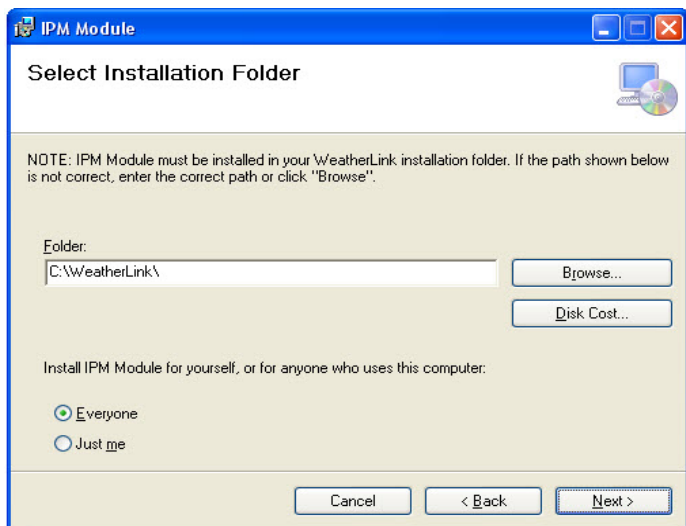
Note: If this is not your first install, skip to Step 4.

1. Place the Integrated Pest Management Module software CD in your CD ROM drive. The install program should start automatically. If the install program does not start, select Run from the Start menu, type D:\SETUP (or the correct letter for your CD ROM drive), and click OK to begin the installation.

Key Code: Keep in a safe place.



-
2. Review the license agreement, click I Agree, and then click Next.
 3. The Select Installation Folder dialog box displays. Make sure the folder specified is the installation folder for WeatherLink. Click **Next**. Successful installation will be confirmed.



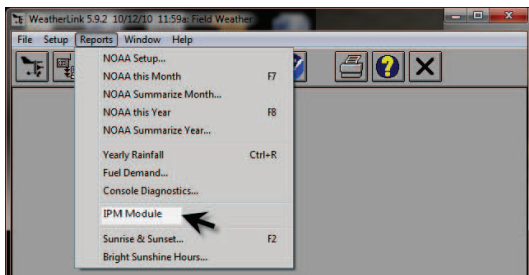
Note: This program requires Microsoft®.NET Framework 4.0. Most computers with internet connection will have this connection software already installed with Windows. If your system does not already have it, it should install automatically with the program. If it does not, you will see an error message instructing you to install it. For your convenience, it is included on the CD, or it can be downloaded at www.microsoft.com.

4. Open WeatherLink and download the newest data (click **Download** in the **File** menu).

Note: The Integrated Pest Management Module assesses pest risk based on the weather data in your WeatherLink database at the time you start the module. **If you download newer data into WeatherLink, you will need to restart the Integrated Pest Management Module in order to use this newer data in assessing risk.** It is also good idea to download before starting the Integrated Pest Management Module each time it is used.

Note: If you are **adding another crop** to the Integrated Pest Management Module: close the IPM Module (if it is running) and leave the CD in the drive while you restart the IPM Module. The new crop will be automatically imported. The models for all crops will appear in Pest Risk Assessment Summary Pane when a valid registration Key for the new crop is entered.

5. From the **Reports** menu in WeatherLink, select **IPM Module**.



6. The Davis software registration screen appears (on first use only).

A screenshot of the Davis Instruments software registration screen. The window title is 'Davis Instruments Registration'. It contains several sections: 'Detected PC Info' with fields for Software Name (IPM Module), Local PC Name (pc400-1232), and MAC Address (002JL56KA52); 'Please Enter Personal Info' with fields for First Name (John), Last Name (Grower), Email (john@gmail.com), Address (123 Main Street), City (Famville), Country (United States), State (CA), and Zip (94545); and 'License Info' with a warning and a table. The table has columns for IPM Module, Key, and Comment. The first row shows 'Grapes' in the IPM Module column and 'Please enter a valid key.' in the Comment column. A 'Register' button is at the bottom right.

The top three fields are automatically populated. Enter your personal information.

Enter your Key code (found on the sticker on the first page of this manual), in groups of four characters, in the columns to the right of the pest module crop you are registering. Click **Register**.

-
7. The Integrated Pest Management Module setup screen opens.
Click the **Help** button on bottom right of the page to learn how to use your software and tailor it to your needs.
-

Note: See Davis' Privacy Policy at: <http://www.davisnet.com/about/privacy.asp>

Contacting Davis Technical Support

If you have questions about the software, or encounter problems installing or using the software, please contact Davis Technical Support. Most questions can be answered on the phone.

Note: Sorry we are unable to accept collect calls.

Phone Support:

(510) 732-7814 -- Monday - Friday, 7:00 a.m.- 5:30 p.m. PST
(510) 670-0589 -- Technical Support Fax

E-Mail Support:

support@davisnet.com -- Technical Support e-mail
info@davisnet.com -- General e-mail
www.davisnet.com -- Davis Instruments web site.

Integrated Pest Management Module

Part Number: 07395.317 Rev. C, December 22, 2011
WeatherLink® is a registered trademark of Davis Instruments Corp. Windows® is a registered trademark of Microsoft Corporation in the United States and other countries.

© 2011 Davis Instruments Corp. All rights reserved.
Information in this document is subject to change without notice. Davis Instruments Quality Management is ISO 9001 certified.



3465 Diablo Avenue, Hayward, CA 94545-2778 U.S.A.

510-732-9229 • Fax: 510-732-9188

E-mail: info@davisnet.com • www.davisnet.com