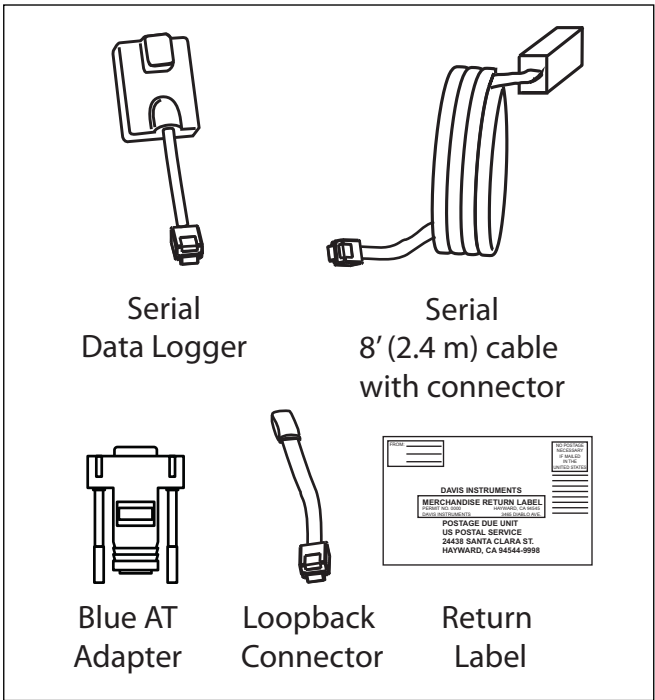


Serial WeatherLink[®] Exchange Kit

This kit will enable you to exchange your USB data logger for a serial data logger. (Serial data loggers are required for use with Vantage Connect Retrofit Kit.)

Contents of Package



- Serial data logger
- 8' (2.4 m) cable with connector
- Blue AT adapter
- Loopback connector
- Return label

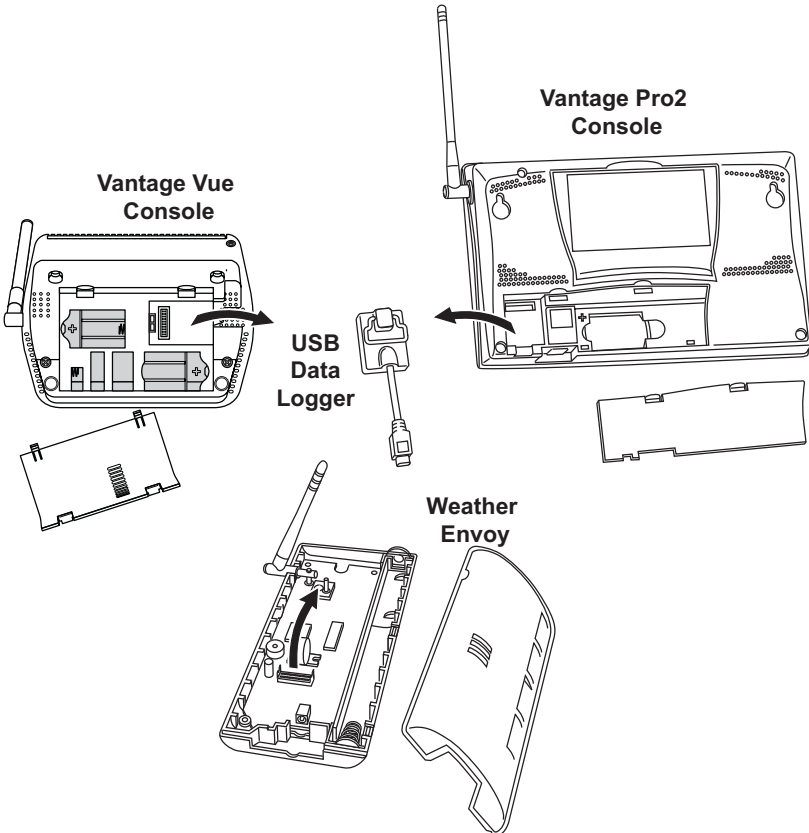
Note: If you are a Vantage Connect Retrofit Kit user, you will need only the serial data logger and the serial cable to exchange your USB data logger. The blue AT adapter is included for those customers who wish to connect the data logger to a serial port on a PC. The loopback connector is a diagnostic tool used to test the com port settings when the data logger is connected to a PC. See your *WeatherLink Getting Started Guide* for more information.

Installation

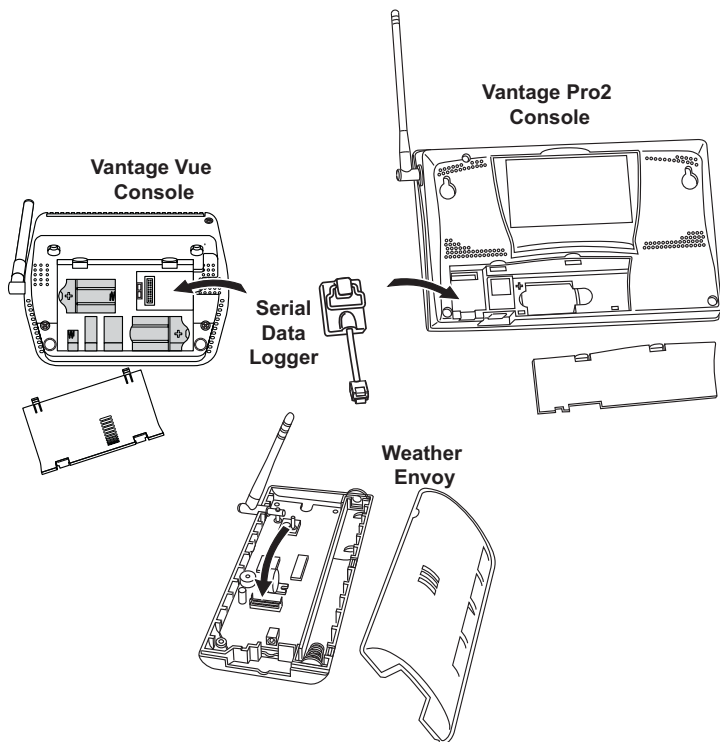
1. Locate the console or Weather Envoy that will receive the WeatherLink serial data logger.
2. Download any data that may be in the data logger.
3. **For consoles only:** Enter the console's Setup Mode by pressing and holding DONE, then pressing the down arrow (-).
Entering Setup Mode ensures that the station is not writing any data and saves the current daily weather information to memory.
4. For consoles and Envoys, remove the battery cover, the batteries, and AC-power adapter, if present.

Note: Failure to remove power to the console or Envoy before installing or uninstalling any data logger may cause damage to the data logger or console.

5. Remove the USB data logger from the large receptacle marked **EXPANSION** inside the battery compartment.



-
6. Insert the serial data logger. Press into place FIRMLY.



7. Guide the data logger cable through the square slot below the receptacle.
8. Reinsert the batteries, and then reconnect the AC adapter, if present.
The console beeps four times (Vantage Vue) or three times (Vantage Pro or Pro2); each beep occurring within one second of the others. Once power has been returned to the console, the Setup Mode is automatically displayed. Press and hold DONE to exit Setup and return to the current weather screen.
The Weather Envoy beeps two times, one second apart.
9. Replace the battery cover so that the data logger cable exits through the square slot.

Note: To extend the cable connection between the console and the Vantage Connect Retrofit Kit, you may use a 40' (12 m), maximum length, straight-through 4-conductor extension cable (Davis part number 7876.040).

10. Proceed with the Vantage Connect Retrofit installation, See your *Vantage Connect Retrofit Kit* manual.
11. Return the USB data logger to Davis Instruments. You may use the exchange kit box - simply attach the merchandise return label (included), seal, and take the box to the US Post Office.

Note: The return label is only valid if mailed within the United States.

Contacting Davis Technical Support

For questions about installing or operating your Serial WeatherLink Exchange Kit, please contact Davis Technical Support. We're glad to help.

Online **www.davisnet.com**

See the Weather Support section for copies of user manuals, product specifications, application notes, software updates, and more.

E-mail **support@davisnet.com**

Telephone **(510) 732-7814**

Monday - Friday, 7:00 a.m. - 5:30 p.m. Pacific Time.

Serial WeatherLink Exchange Kit

Product Number 6530

07395.256 Rev. A, July 10, 2012

Vantage Connect™, Vantage Pro®, Vantage Pro2™, Vantage Vue®, WeatherLink® and Weather Envoy™ are trademarks of Davis Instruments Corp., Hayward, CA.

© Davis Instruments Corp. 2012. All rights reserved.

Information in this document subject to change without notice. Davis Instruments Quality Management System is ISO 9001 certified.



3465 Diablo Avenue, Hayward, CA 94545-2778 U.S.A.

510-732-9229 • Fax: 510-732-9188

E-mail: info@davisnet.com • www.davisnet.com